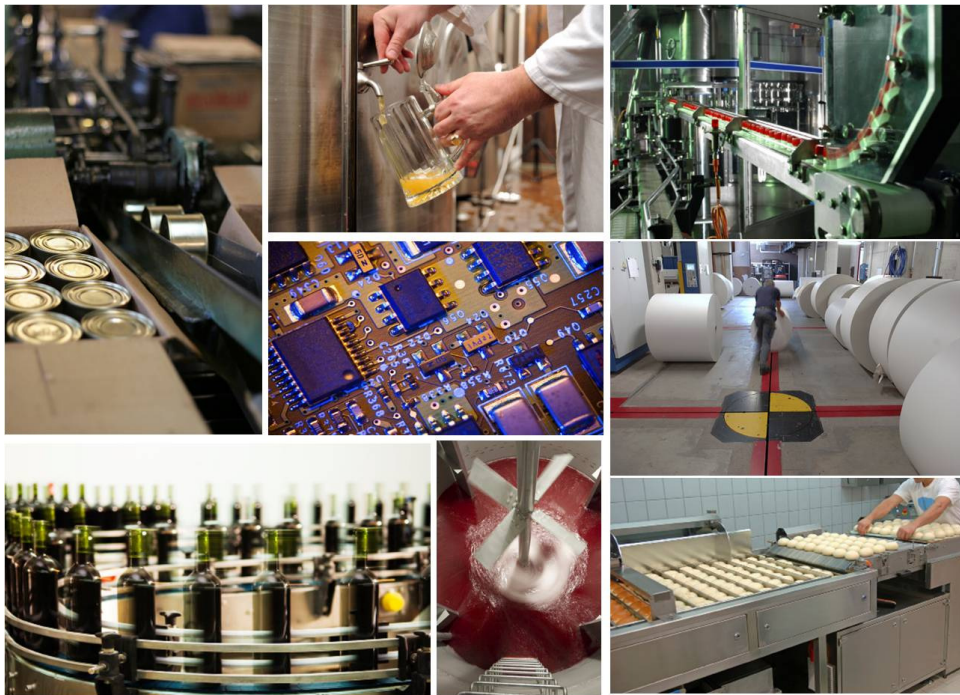




Data	17 ottobre 2010
Autore	MASTER
Company	OPT Solutions
Factory Innovation	



Planning Solutions Specialist



PlanetTOGETHER Futures



Data	17 ottobre 2010
Autore	MASTER
Company	OPT Solutions
Factory Innovation	

Sommario

Solutions Overview	4
Business Benefits	5
Key Features	6
VISUAL SCHEDULING BOARD	6
Advantages:	7
POWERFUL ORDER & RESOURCE OPTIMIZATION ENGINE	7
Advantages:	7
"WHAT-IF" IMPACT ANALYSIS	8
Advantages:	8
FINITE RAW MATERIAL, MACHINE, LABOR & TOOLING CONSTRAINTS	9
Advantages:	9
PROCESS MANUFACTURING CONSTRAINT-BASED SCHEDULING	10
MULTI-USER & MULTI-PLANT CAPABILITIES	10
Master Schedulers Users	10
What-If Users	10
View-Only Users	11
Multi-Plant	11
Advantages:	11
MICROSOFT.NET DEVELOPMENT	11
Advantages:	11
PLANETTOGETHER'S MICROSOFT OFFICE LOOK, FEEL, AND CONNECTIVITY..	12
Microsoft Excel	12
Microsoft Access	13
Microsoft Project	13
Microsoft Outlook	13
SALES & OPERATIONS PLANNING	14
Advantages:	14
FORECASTS ACCURATE SCHEDULES	15

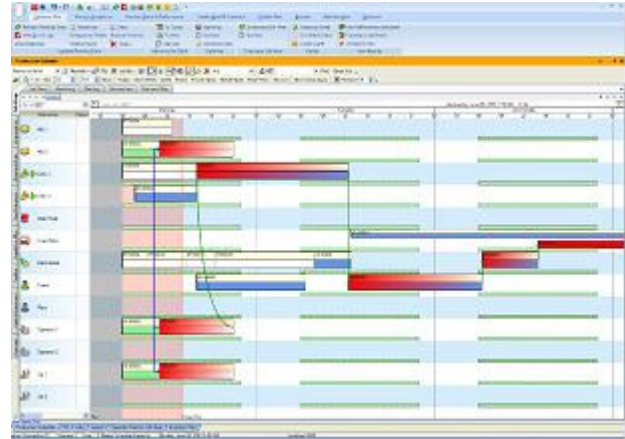


Data	17 ottobre 2010
Autore	MASTER
Company	OPT Solutions
Factory Innovation	

Advantages:	15
Solutions Details	15
Levels.....	15
Visual Scheduling (Base System)	16
Optional Modules.....	16
PLANETTOGETHER'S LICENSES	17
Plant License:	17
Master Scheduler License:	17
What-If User License:	17
View-Only User License:	17
Shop-View Only License:	17
PLANETTOGETHER'S BASE SYSTEM	18
Server Components	18
Visual Scheduling Board.....	18
Capacity Planning Board.....	19
Key Performance Indicators to track schedule quality.....	19
Constraint Modeling Functionality.....	19
Job Entry.....	19
Reports	20
ADVANCED PLANNING & ANALYTICS MODULE	21
Advantages:.....	21
CONTACTS	22
YOURIndustry	22
ABOUTPlanetTogether	22
Settori Industriali	23
Chi è PlanetTogether.....	23
Chi è OPT Solutions	23
Contattaci:	23

Solutions Overview

PlanetTogether customers have transformed their planning and scheduling processes from disconnected spreadsheets and ad-hoc procedures to productive and profitable modern methods using PlanetTogether visual planning, scheduling and optimization software. Using real-time integrated sales and manufacturing data, PlanetTogether optimizes orders and resources using adjustable planning rules tuned to your key business drivers.



These are the key functions that PlanetTogether provides your team to maximize your success:

Resource Scheduling Automation and Easy Adjustment

Integrated to your existing order tracking systems, PlanetTogether produces accurate schedules that update automatically saving you time and giving you unprecedented visibility. Easy drag-and-drop adjustment allows for flexibility and control over every aspect of your schedules and resources. All important constraints are taken into account automatically including: machine capacity, labor, inventory, and tooling for schedules that are truly accurate and reliable.

Order Prioritization

Build thoughtful rules into your prioritization of orders and customers to be sure that the most important customers are taken care of and the most profitable alternatives are chosen.

Exception Warnings and Preventive Planning

Spot bottlenecks, material shortages, and potential problems in advance while low-cost solutions and alternatives still exist.

Output Maximization and Cost Minimization

Get the most out of your existing resources by minimizing changeovers, assigning work to the best resources for the job, and level-loading your work to avoid idle time. Cut inventory carrying costs by scheduling to produce the right materials at the right place at the right time.

Performance Tracking and Improvement

Identify and correct performance problems by tracking actual results versus standards-based schedules. Know right away if jobs are falling behind and are at risk of shipping late.



Data	17 ottobre 2010
------	-----------------

Autore	MASTER
--------	--------

Company	OPT Solutions
---------	---------------

Factory Innovation

Capacity and Inventory Planning

Gain the visibility of planned workload and backlogs by department and by resource so staffing levels can be planned for. Be forewarned if production will fall short of demand or safety-stocks targets so adjustments can be made and high customer service levels achieved.

What-If Scenario Analysis

Look at alternative plans such as varying shifts, overtime and new orders to make informed decisions – all without interfering with the “live” schedule. Share what-if scenarios with others in your team to collaborate for the best possible results.

Business Benefits

Business Owners

- Win more orders and keep customers coming back by shipping quickly and delivering on-time.
- Cut overtime and inventory carrying costs, and delay capital equipment expenditures by utilizing resources to their fullest.
- Increase your competitive edge with quick turnaround and state of the art shop floor control.

Operations Managers

- Increase your visibility of future bottlenecks and workloads to reduce last-minute emergencies.
- Reduce manufacturing costs by better utilizing resources and cutting inventories.
- Achieve higher on-time delivery and quicker turnaround on customer orders.

Planners

- Save the time and effort of updating disconnected spreadsheets since schedules are updated automatically based on data in your manufacturing system.
- Provide order ship dates and schedules to others within the organization more easily without so many phone calls and e-mails.
- Produce great results for your company and enjoy more interesting day-to-day work.
- Get certified on leading-edge planning and scheduling tools.

Sales and Customer Service

- Win more orders by promising shorter lead-times and accurate promise dates.
- Gain clear insight into order status and expected delivery dates.
- Keep your customers happy by delivering on-time.

IT Personnel

- Simplify your system maintenance requirements by relying on PlanetTogether personnel to maintain your planning solution remotely.

- Provide necessary tools to company personnel without having to update their client computers due to PlanetTogether's self-updating client software.
- Learn more about key technologies such as Microsoft .Net and SQL Server.

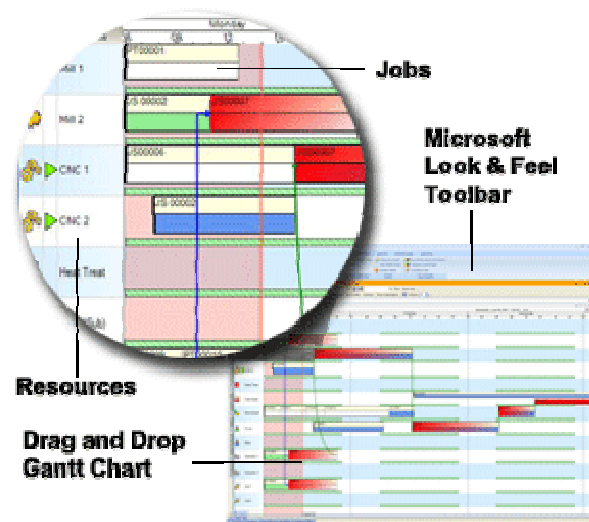
Key Features

Are you looking for the best scheduling software to fit your company? PlanetTogether uniquely empowers you with features that other systems don't offer. Because our developers have more than a decade's worth of experience creating production scheduling software, PlanetTogether has all the features any scheduler and facility could ask for. Here are a few of our key features:

1. **Visual Scheduling Board** for easy "drag-and-drop" re-scheduling
2. **Optimization Engine** to maximize production efficiencies and on-time delivery
3. **"What-If" Impact Analysis** to evaluate proposed changes before committing resources
4. **Constraint-Based Scheduling** create constraining links between different jobs explicitly or based on time-phased inventory, production and bills-of-material
5. **Process Manufacturing Constraints** have special rules for batch production scheduling in industries such as Food & Beverage and Chemical production
6. **Multi-User & Multi-Plant Capabilities** for multiple factories or planners
7. **100% Microsoft.Net Architecture** to easily extend, support, and use
8. **Sales & Operations Planning** to plan inventory and synchronize production with demand
9. **Forecasts Accurate Schedules** with Real-Time Updates

Visual Scheduling Board

We have the most scheduling features than any other Advanced Scheduling and Planning software out there. And most of all, PlanetTogether is not afraid to show you the face of their software because PlanetTogether has most usable and visually pleasing scheduling board. Manufacturers face numerous constraints on a daily basis as they strive to ship orders on-time and at minimum cost. If equipment, labor and materials were unlimited life would be much easier. However, the reality in this globally competitive manufacturing landscape is that production managers and planners have limited resources with which to work. PlanetTogether gives you the tools to maximize your utilization of limited resources by creating schedules that take all of your resources into account as schedules are optimized around your business drivers.





Data	17 ottobre 2010
Autore	MASTER
Company	OPT Solutions
Factory Innovation	

Advantages:

- Allows users to easily move orders around with PlanetTogether's exclusive Drag-and-Drop tool feature and always respects constraints while automatically moving other work out of the way.
- Includes advanced scheduling features like overlap, storage constraints, and custom constraints.
- Gives the look-and-feel of Microsoft products for easy usage.
- Manages all constraints by taking into account materials, machines, labor, and tooling.
- Infinitely customizes activity labels on our powerful Resource Gantt and Job Gantt.
- Shows resource utilization and availability by looking at an organized Capacity Plan graph and grid.
- Highlights problems, like bottlenecks, in red so you'll never miss a scheduling conflict again.

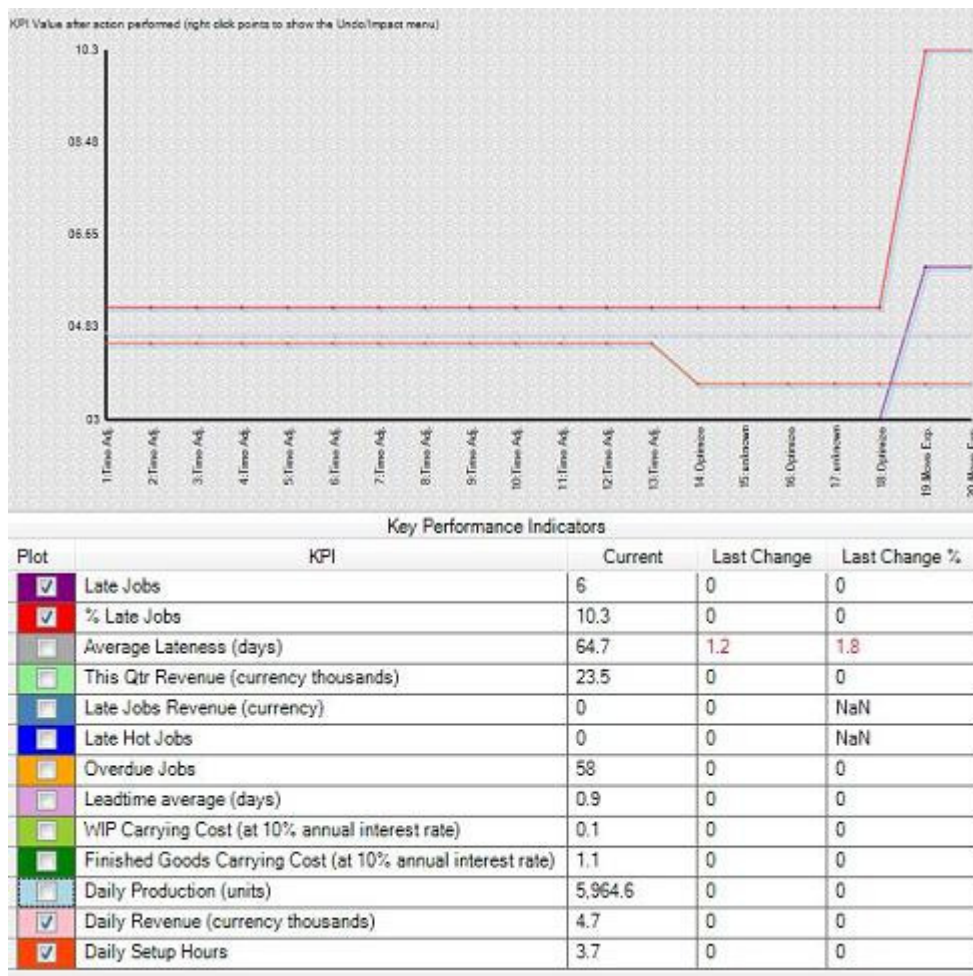
Powerful Order & Resource Optimization Engine

Is planning your production resources taking you too long?
PlanetTogether's powerful optimization engine takes into account all the rules based on your goals and your production requirements to create a schedule with a click of the button. Our "Optimize" button can schedule your shop floor all by itself.



Advantages:

- Drives efficient production based on your goals and requirements.
- Transforms a full-time scheduling job into a 15 minute task.
- Resource-specific rules for balancing between any combination of: due dates, priority, revenue, WIP reduction, setup time reduction, work remaining, and much more.
- JIT (Just in Time) scheduling to minimize Work-In-Progress inventory.
- Theory of Constraints scheduling with Drum-Buffer-Rope logic.
- Custom Constraint Engineering for developing company-specific rules.

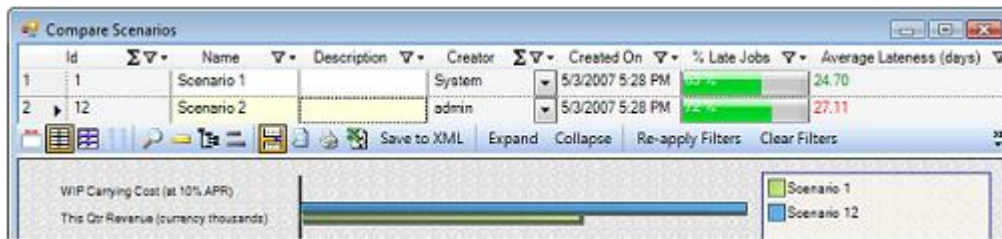


"What-If" Impact Analysis

Do you have problems predicting outcomes? PlanetTogether's "What-If" Impact Analysis predicts outcomes to enable quick informed decisions.

Advantages:

- Predict outcomes based on your real and experimental schedules.
- List all orders affected by any schedules change.
- Graph and track schedule quality by using Key Performance Indicators.
- Undo/Redo user actions for safe evaluation of alternatives.
- Create multiple scenarios for comparing the main schedule against experimental schedules.
- Delivers a truly usable decision support system.



Finite Raw Material, Machine, Labor & Tooling Constraints

Manufacturers face numerous constraints on a daily basis as they strive to ship orders on-time and at minimum cost. If equipment, labor and materials were unlimited life would be much easier. However, the reality in this globally competitive manufacturing landscape is that production managers and planners have limited resources with which to work. PlanetTogether gives you the tools to maximize your utilization of limited resources by creating schedules that take all of your resources into account as schedules are optimized around your business drivers.



Advantages:

- Material availability constrains operation schedules based on current inventory levels and projected purchase order receipt dates, for realistic schedules and reduced time evaluating what can be worked on and what is waiting for materials.
- Machine capacity adjusts schedules automatically based on working hours and when equipment is taken down for maintenance or repair.
- When production workers are absent schedules can be automatically adjusted and work off-loaded to other personnel.
- If tooling is limited, schedules will take this into account to avoid over-scheduling of limited tools even if enough machines or labor are available.
- Whether labor, equipment, tools, materials (or any combination thereof) are limiting factors, they are scheduled accurately (even during drag-and-drop!) so schedules are always reliable and can be followed by the shop floor.
- While most of your constraints can be handled “out of the box” by PlanetTogether, you may have requirements that are particular to only your business. No problem! PlanetTogether’s constraints are fully customizable with .Net add-ins that we can build for you and that upgrade smoothly with new releases of the software.

Process Manufacturing Constraint-Based Scheduling

Chemical, food and other process manufacturers have special needs for scheduling production operations to maximize resource utilization and meet customer demand while respecting a myriad of critical production constraints. These are some of the constraints that are common in process manufacturing and need to be handled by your scheduling software for effective planning:

- Batch production in tanks that is then packaged in a variety of ways.
- Continuous flow operations requiring scheduling of sequential operations without delay or with maximum allowable delays. Example: Baked bread must be frozen within minutes of being baked.
- Limited storage Example: A brewery with intermediate storage constraints.
- Avoid cross-contamination Example: Products containing allergens must be processed at the end of the week or on separate lines.
- Variable packaging options and speeds with varying labor requirements.
- Resource selection and process times driven by batch sizes.
- Material flow constraints Example: Selection of a particular grinder determines which pack lines can be used due to material conveyance configurations.

Multi-User & Multi-Plant Capabilities

Are there too many planners, managers, or departments needing to work on the schedules at the same time? Collaboration planning allows your departments to work cohesively with any number of planners and viewers. It allows parties from different work sectors, from labor to management, to monitor and update each others scheduling at any given time.



Master Schedulers Users

Any number of Master Schedulers can work together to coordinate activities in your production process. Each Master Scheduler can optimize, adjust, update, and publish your schedules.

What-If Users

Managers, sales or other personnel can be given the ability to adjust and query your schedules to analyze “what-if scenarios” for powerful insight into the impact of changes to the schedule in terms of overtime, resource, new orders. These changes can be made in a “sandbox” environment where the actual schedule is untouched.



Data	17 ottobre 2010
Autore	MASTER
Company	OPT Solutions
Factory Innovation	

View-Only Users

Users who access the system in “View-only” mode can see all of the graphics and reports that the system has to offer without any risk of them changing anything. If given the security rights, they can also update the status of work in the schedule to reflect progress in production.

Multi-Plant

If you have multiple facilities in the same or separate locations they can be planned under one coordinated system. Plants can be optimized independently or they can have constraints that are interrelated such as when one plant supplies another plant materials. Viewing different plants is as simple as clicking on a different “tab” on the screen.

Advantages:

- Provides shop floor personnel with live, updated schedules.
- Always includes current dispatch lists by resources, reports on stages of production for projects, real-time hours and quantities.
- Planners simultaneously manage schedules for the operations they know best.
- Schedule by work center, department, facility, product line, or customer-- Freedom to schedule any way your personnel feels more comfortable.

Microsoft.Net Development

Do you know what the Microsoft.Net Framework can do for you? Unlike any other Advanced Scheduling and Planning system on the market, PlanetTogether was developed from the ground up in the Microsoft .Net Framework. This means that when you invest in PlanetTogether you'll have a platform with a long life ahead of it that is ready to grow with you. You'll be choosing industry-standard technology that Microsoft is fully committed to and that has highest adoption and support in the software industry.



Advantages:

- Grows with your business.
- Makes PlanetTogether easy to extend, to support and to use.
- Gives the [Look-and-Feel of your everyday Microsoft software](#) making all tools easy to understand and find.
- Runs on 64 and 32 bit computer architecture.
- Encompasses SQL Server and Reporting Services.
- Allows distributed internet collaboration for displaying the most current schedules and reports.
- Has high reliability, platform independence, productive multi-panel workspace, easy customization and much more.
- Can run with SQL Server 2000, 2005, or 2008 plus SQL Server Express.



Data	17 ottobre 2010
Autore	MASTER
Company	OPT Solutions
Factory Innovation	

- Extend your solution with custom Visual Studio reports, forms, and special scheduling rules.
- Easily connect to other .Net programs for real-time integration.

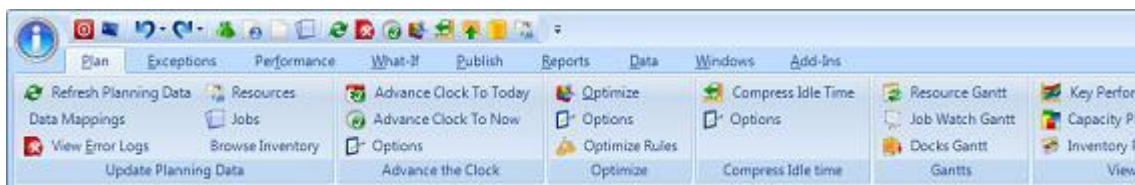


PlanetTogether's Microsoft Office Look, Feel, and Connectivity

Your people will get it. They'll be productive immediately!

PlanetTogether will make your people more productive because they will use it! People who use Microsoft Office products find PlanetTogether intuitive and appreciate the easy connectivity to familiar Office applications. Because PlanetTogether is built in the Microsoft .Net Framework, it has a natural fit with other Microsoft products.

PlanetTogether's user interface design is based on the new Microsoft Office Ribbon...



Microsoft Excel

All PlanetTogether tables can be opened in Excel in one click!



Data	17 ottobre 2010
Autore	MASTER
Company	OPT Solutions
Factory Innovation	

13	Batch 0012	6/24/2007 12:00 PM	▼	0 %
14	Batch 0013	6/23/2007 6:00 AM	▼	0 %
15	CH 001	6/10/2007 8:00 AM	▼	0 %

Save to XML

Gantt Impact Jobs KPI Capacity Plan Inventory Plan

Excel can also tie into PlanetTogether's SQL database for real-time update.



Microsoft Access

If you have existing custom systems built on Microsoft Access, PlanetTogether can easily connect through its Interface Wizard.

Microsoft Access can also be used for creating custom PlanetTogether reports.



Microsoft Project

PlanetTogether has built-in connectivity to Microsoft Project. So you can create schedules in PlanetTogether and view, mark-up and print them from Project.

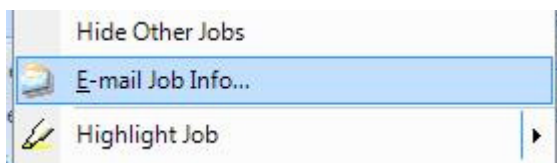


Microsoft Outlook

In addition to resource and project schedule views, PlanetTogether has a familiar Outlook schedule view that is fully adjustable with drag-and-drop!



Plus, job information can be easily e-mailed manually or from automated Alerts.



Sales & Operations Planning

Companies that produce to stock rather than to custom orders need tools to synchronize supply with demand. PlanetTogether Sales & Operations Planning presents all pertinent information in a simple yet powerful tabular form to enable planners to identify supply shortages and adjust production schedules to cover any shortfalls.



Advantages:

- See inventory projections that take on-hand inventory, Sales Orders, Forecasts, Transfer Orders, Purchase Orders and Production Orders into account.
- Easily identify potential inventory backlogs highlighted in red and avoid lost sales.
- Quickly coordinate production schedules to be in-sync with demands using drag-and-drop editing.
- Predict when materials will run out in time to order replenishments.
- Identify the impact of capacity shortages on Forecasts and Sales Orders.

		Shortage	Low Stock	OK						
13	Intermediate 1		CH Plant	100.00		100.00				
	Info Type	▼→⇄	6/4/2007	Σ▼→⇄	6/11/2007	Σ▼→⇄	6/18/2007	Σ▼→⇄	6/25/2007	Σ▼→⇄
1	- Sales Orders		0.00		0.00		0.00		0.00	
2	- Forecast		0.00		0.00		0.00		0.00	
3	- Job Materials		0.00		-300.00		0.00		0.00	
4	- Transfer Out		0.00		0.00		0.00		0.00	
5	+ Transfer In		0.00		0.00		0.00		0.00	
6	+ Production		0.00		0.00		500.00		0.00	
7	Net Inventory		100.00		-200.00		300.00		300.00	

Forecasts Accurate Schedules

Are you having a problem forecasting schedules? PlanetTogether runs on real-time updates that allow schedules to always be current. So, if any department or personnel makes a change, PlanetTogether automatically updates those changes from you system to the shop floor and in every department.



Advantages:

- Delivers most accurate and current schedules.
- Gives your personnel ability to work with correct schedules every minute of the day.
- Communicates live dispatch lists or schedules directly to the shop floor.
- Schedules simple single-operation jobs all the way up to many-to-many operation flows.
- Allows you to make changes whenever you want without the worry of communicating those changes to the rest of the team.
- Rids the worry about having different schedules on the shop floor.

Solutions Details

PlanetTogether solutions fit your business. Simply choose the system Level based on the size of your company and the functional Modules based on your scheduling needs. The result is a solution that is right for you now and has the flexibility to grow as your business grows.

Levels

- **Enterprise:** Companies with multiple locations face challenges such as: process standardization across facilities, inter-plant coordination, and multi-warehouse storage and transfer. PlanetTogether Enterprise handles these challenges and provides a cohesive solution across your entire company.



Data	17 ottobre 2010
Autore	MASTER
Company	OPT Solutions
Factory Innovation	

- **Standard:** Whether your company is a mid-size to large business or a small business that is thriving and growing, PlanetTogether Standard will provide you with the tools to simplify your scheduling challenges and streamline your manufacturing flows, while enabling your team to work together.
- **Small Business:** Small manufacturers face many of the challenges of larger manufacturers and as a business grows manual and spreadsheet-driven tools often become a burden to maintain and difficult to use. PlanetTogether Small Business will provide an easy-to-use, integrated scheduling solution that helps take your business to the next level.

For all system levels, PlanetTogether offers unique “collaborative” scheduling which means multiple users can work together cohesively, adjusting and viewing schedules and what-if scenarios as needed.

Visual Scheduling (Base System)

The Base System is the starting point which has the critical functionality that all manufacturers need to simplify their scheduling process and increase productivity on the shop floor with the improved visibility and ease of drag-and-drop scheduling and capacity planning.

Optional Modules

The following modules can be added to the Base System, in any configuration. (Typically the Finite Capacity & Raw Material scheduling option is selected along with any of the other Modules though it is not a strict prerequisite.)

- Finite Capacity & Raw Material Constraints
- Optimization and “What-If” Scenarios
- Advanced Planning & Analytics
- Additional Plant licenses

Capacity Planner and Drag-and-Drop Scheduling (Base system)

This is the base system and is required for all installations. It show capacity plans by bucketed time periods and schedules based upon the due dates and then allows for drag-and-drop schedule adjustments on visual scheduling boards. This module alone is useful for companies with a small number of jobs (under 25 for example) where manual scheduling is practical. Companies with higher volumes or many scheduling rules and constraints should consider additional options to automate and optimize schedules.

Automated Finite Scheduling and Impact Analysis

Saves time and effort in creating realistic schedules that take all capacity constraints (machines, labor, and tooling) and raw material availability into account. This can reduce the time to create schedules from days to minutes in companies with large numbers of production orders, operations, or capacity bottlenecks.

Multi-factor Optimization & What-If Scenarios (requires Finite Scheduling)



Data	17 ottobre 2010
Autore	MASTER
Company	OPT Solutions
Factory Innovation	

Generate schedules that optimize around multiple key business drivers such as revenue, maximizing utilization, minimizing cost, etc. What-If scenarios enable creation of any number of sample schedules to evaluate the impact of planning decisions without affecting the live schedule.

Advanced Planning & Analytics (requires Finite Scheduling)

Provides component/intermediate material constraints and inventory planning tools to automate scheduling, taking intermediate/subassembly material requirements and availability into account. This is important functionality for companies with multi-level bills of material and make-to-stock, or make-to-forecast planning processes. Process manufacturing companies benefit from advanced constraint modeling such as: Resource Connectors, Max-Delay/Shelf Life, Compatibility constraints, etc.

PlanetTogether's Licenses

Plant License:

The ability to schedule resources for an additional production facility. If facilities will operate independently, they can also be installed on separate, independent servers. One Plant license is included with all base systems. (User licenses sold-separately.)

Master Scheduler License:

Full master-scheduling capabilities for an additional user including the ability to edit jobs, optimize, reschedule, create resources, publish schedules, etc. One Master Scheduler license is included with all base systems.

What-If User License:

Multi-scenario, full what-if evaluation of schedule changes for an additional user. This includes the ability to create any number of Scenarios, modify jobs, capacity, maintenance schedules, resources, etc., but not the ability to publish or edit “live” schedules. (Requires the What-If Scenarios Option.)

View-Only User License:

Ability for additional users to view the graphic schedule, capacity plans, inventory plans, and other screens plus the (rights-based) ability to update Job statuses in real-time.

Shop-View Only License:

Ability for additional users to view dispatch lists by resource and update work status in real-time.



Data	17 ottobre 2010
------	-----------------

Autore	MASTER
--------	--------

Company	OPT Solutions
---------	---------------

Factory Innovation

PlanetTogether's Base System

PlanetTogether's Base System contains the core functionality for all PlanetTogether installations. The core modules have critical functionality that manufacturers need to simplify their scheduling process and increase productivity on the shop floor.

The base system is required for all installations. It schedules based upon ERP-specified schedule dates or Just-in-Time (JIT) dates and then allows for drag-and-drop schedule adjustments on visual scheduling boards. This module alone is useful for companies with a small number of jobs (under 25 for example) where manual scheduling is practical. Companies with higher volumes or many scheduling rules and constraints should consider additional options to automate scheduling and optimize schedules.

Server Components

- Scheduling Engine
- Collaboration Services
- User Security
- Integration Services (SQL, Oracle, OLE, text files, Excel, etc.) with manual or time-based import/export
- SQL Reporting Services

Visual Scheduling Board

- Drag-and-drop scheduling and rescheduling with auto-adjustment of dependent operations
- Just-In-Time (JIT) scheduling to schedule "backwards" based on required delivery dates taking work calendars into account
- Resource eligibility assignments to avoid scheduling mistakes
- Undo/Redo of all changes
- Operation links, color coding, custom text labels and many other visual indicators
- Splitting, expediting, holding, un-scheduling, locking, anchoring and other scheduling tools
- Visual "Job Watches" of Late & Overdue Jobs to track them more closely
- Customizable Flags to visually alert planners of schedule mistakes
- Live and Published Scenarios to separate shared schedules from schedules that planners are working on
- Full Screen Gantt option
- Microsoft Outlook™ style Schedule View to see and adjust schedules in a familiar Outlook style
- Time hiding to make better use of screen width by hiding inactive time such as nights and weekends
- Unlimited scheduling horizon
- View time by any zoom level from minutes to years
- Quick-zoom feature to "lasso" operations to zoom into for focused viewing then quickly zoom back out
- Operation Splitting by time, quantity, etc. to get work done more quickly by dividing it between resources



Data	17 ottobre 2010
Autore	MASTER
Company	OPT Solutions
Factory Innovation	

Capacity Planning Board

- Plan workload against capacity
- Capacity by Work Center or Resource; Capacity Intervals to set working times, overtime, breaks, holidays, cleanouts, and maintenance
- Planning by Product, Customer, Priority, etc.

Key Performance Indicators to track schedule quality

- Plot KPI to compare schedules
- Choose the best schedule
- Resource performance tracking

Constraint Modeling Functionality

- Infinite capacity scheduling of any number of Resource per Operation (such as machines, labor, tools, etc.)
- Scheduling by multiple “capabilities” such as skill levels or material types
- Sequential and network (many-to-many) operation precedence constraints
- Overlap (parallel) scheduling of operations
- Setup, run, post-process, and transfer time scheduling on each Operation
- Scrap-adjusted quantities
- Subcontract operation scheduling
- Including setup times in schedules based on product sequences
- Resource configurator to define detailed Resources
- Clock Advance option to automatically adjust the schedule by pushing forward work not completed on time as time passes
- Scheduling of setup, run, post-processing, material-post-processing, and transfer times for each operation
- Option to automatically reschedule operations to avoid interruption by offline periods (such as paint operations that can't span breaks or shifts)
- Resource effectivity adjustments to scale operation schedule times based on individual Resource historical efficiency levels
- Overlapping operations for scheduling operations that can be done in parallel for shorter production times

Job Entry

- Create, edit and copy Jobs
- Create Templates for new Jobs
- Lock Jobs to preferred Resources
- Anchor Jobs to promised times
- View Job lists and progress information
- Drill-down to Job status and details
- Job Changes Monitor to track changes to Jobs over time



Data	17 ottobre 2010
------	-----------------

Autore	MASTER
--------	--------

Company	OPT Solutions
---------	---------------

Factory Innovation

- Ability to place Jobs "on-hold" to prevent them from taking up time in the short term schedule and flag them visually
- Commit dates for tracking of conformance to schedule
- Quick Find of Jobs and Resources in Gantts
- Screens for reporting progress on jobs
- Option to auto-finish operations as scheduled as time passes to reduce status reporting requirements
- Ability to Omit optional Operations from scheduling
- Job Notes

Reports

In addition to the many views listed above, PlanetTogether includes a wide range of powerful reports. Plus, to give you all the visibility you need, you can create custom reports or we can create them for you.

Standard Reports

- Graphical Gantt Chart
- Work dispatch by Resource, by Department, by Plant
- Job Status
- Changeovers
- Late Jobs
- Production by Product
- Resource Performance
- Job performance

Web-based Reports

- Users can access standard or custom reports from a browser
- No need to install any software on clients
- Based on industry standard Microsoft Reporting Services

Custom reports can be created with the following tools (plus any other tool that works with Microsoft SQL Server)

- SQL Reporting Services
- Microsoft Access
- Microsoft Excel
- Crystal Reports

More base system features

- Export of views to Excel, PDF, XML, or XPS files
- Integrated data validation and error logging



Data	17 ottobre 2010
------	-----------------

Autore	MASTER
--------	--------

Company	OPT Solutions
---------	---------------

Factory Innovation	
--------------------	--

- Real-time system backup of all user actions
- Dockable, user-configurable window layout
- Collaborative, multi-user scheduling that allows multiple planners to adjust schedules concurrently and others to view schedules as they are updated
- Collaboration pane for inter-user instant messaging and visibility
- Multi-language support by user
- Integrated help system
- Unlimited user-defined fields on all system objects

Advanced Planning & Analytics Module

This module provides component/intermediate material constraints and inventory planning tools to automate scheduling taking dependent material requirements and availability into account. This is important functionality for companies with multi-level bills of material, and make-to-stock, or make-to-forecast planning processes.

Advantages:

- **Multi-level bill-of-material pegging** for material constraint-based scheduling of intermediates any number of levels deep.
- Subcomponent and intermediate work orders can have **due-dates and priorities automatically calculated** and prioritized based on top-level requirements. This greatly simplifies data management and enables the system to plan all of your activities based on customer promise dates and priorities without having to manually update sub-work order due dates manually.
- **Fixed inter-Job constraints** to enforce dependencies between Jobs for easier, more realistic scheduling
- **Visual linking between dependent Jobs** (direct links or material pegged links)
- **Inventory Planning tool for viewing supply and demand by item by warehouse** identify material shortages and plan to meet demand with supplies
- **[Sales & Operations Planning](#): Sales Orders, Transfer Orders, and Forecasts to plan for dependent and independent demand for inventory and demand planning**
- Custom MRP for creating Jobs to meet inventory demands
- Bi-products and co-product planning
- E-mail Alerts for alert people of schedule problems and/or progress on Jobs
- My Views feature that allows for custom user-interface tools such as dashboards, tables, or any other display element
- Shop Views enable remote users to view updated dispatch lists and report production times and quantities for real-time schedule updates
- Docks Gantt for visually scheduling loading docks for incoming purchase orders
- Change Orders that can be used for tracking requests for new production or changes in Jobs
- **[Process-manufacturing constraints including](#):**
 - Volume Storage Constraints that automatically warn for over-scheduling of "volume-based" resources such as bins or tanks
 - Connectors that specify allowable inter-Resource flows



Data	17 ottobre 2010
------	-----------------

Autore	MASTER
--------	--------

Company	OPT Solutions
---------	---------------

Factory Innovation

- Product Rules that allow for time standards to vary for a given Job-Operation depending upon which Resources is used
- Quick tools for splitting batches into various sizes and lengths to fill available capacity
- Assignment to Resources based on min/max batch sizes
- Multi-stage scheduling for tightly overlapped intermediate material flows that compress schedules
- Conveyor constraints using “sequential” resources

Contacts

YOUR Industry

Chemical, food & beverages, packaging, high-tech supplies, and other manufacturers have special needs for scheduling production operations to maximize resource utilization and meet customer demand while respecting a myriad of critical production constraints. These constraints in manufacturing can be handled by our scheduling software for effective planning. PlanetTogether's Advanced Process Manufacturing modules have the specialized capabilities to take these constraints into account automatically and/or to alert planners to the violation of constraints. In addition, PlanetTogether's Microsoft .Net architecture allows for easy addition of custom constraints that are unique to your business for production of schedules that respect your real-world requirements. The result is maximum production output, reduced time lost to changeovers and a planning process that is easy to manage.

ABOUT PlanetTogether

PlanetTogether is 100% focused on providing best-of-breed Advanced Planning & Scheduling (APS) software to discrete and process manufacturing companies. PlanetTogether is an endorsed product of Sage Software and over fifty companies have partnered with the PlanetTogether solution worldwide. PlanetTogether is the result of 14 years of applied experience in production scheduling. It is an easy-to-use tool that handles complex finite scheduling taking equipment, labor, and material constraints into account. It provides accurate scheduled ship dates, "what-if" analysis, and increased capacity visibility.



Data	17 ottobre 2010
Autore	MASTER
Company	OPT Solutions
Factory Innovation	

Settori Industriali

Chimico, farmaceutico, meccanico, alimentare, high-tech e ogni altra industria con particolari esigenze di pianificazione delle attività di produzione al fine di massimizzare l'utilizzo delle risorse e soddisfare la domanda dei propri clienti, nel rispetto dell'infinità dei vincoli presenti in contesti produttivi critici. Tutti i vincoli di produzione possono essere gestiti dal software di schedulazione per una programmazione della produzione efficace. Il sistema Avanzato di Pianificazione "PlanetTogether" permette di gestire questi vincoli automaticamente e/o evidenziare la violazione degli stessi. Inoltre PlanetTogether è basato su un architettura Microsoft.Net che facilita l'aggiunta di vincoli personalizzati specifici per ogni azienda. Il risultato è una produzione ottimizzata, riduzione dei tempi di setup ed un processo di pianificazione facile da gestire.

Chi è PlanetTogether

PlanetTogether è un'azienda specializzata esclusivamente nella fornitura di soluzioni software Advanced Planning & Scheduling (APS) per aziende di produzione discreta e di processo. Il software PlanetTogether è stato approvato da SAGE Software (leader mondiale ERP) e alla sua realizzazione hanno collaborato più di cinquanta aziende. È il risultato di 14 anni di esperienza applicata alla programmazione della produzione.



Chi è OPT Solutions

Realizza progetti con professionalità e tecnologie innovative. Consulenza e software professionali per il mondo della produzione e della qualità: Pianificazione, Schedulazione, Controllo, Analisi e Simulazione.

Contattaci:

www.optolutions.it

info@optolutions.it

Solutions and Projects for Factory Innovation

